

# What's New

Maximo Asset Management 7.6.1.2

May 2021

Mikael Simonsson, IBM

Jonas Lindeqvist, IBM

# Please note

IBM's statements regarding its plans, directions, and intent are subject to change or withdrawal without notice at IBM's sole discretion.

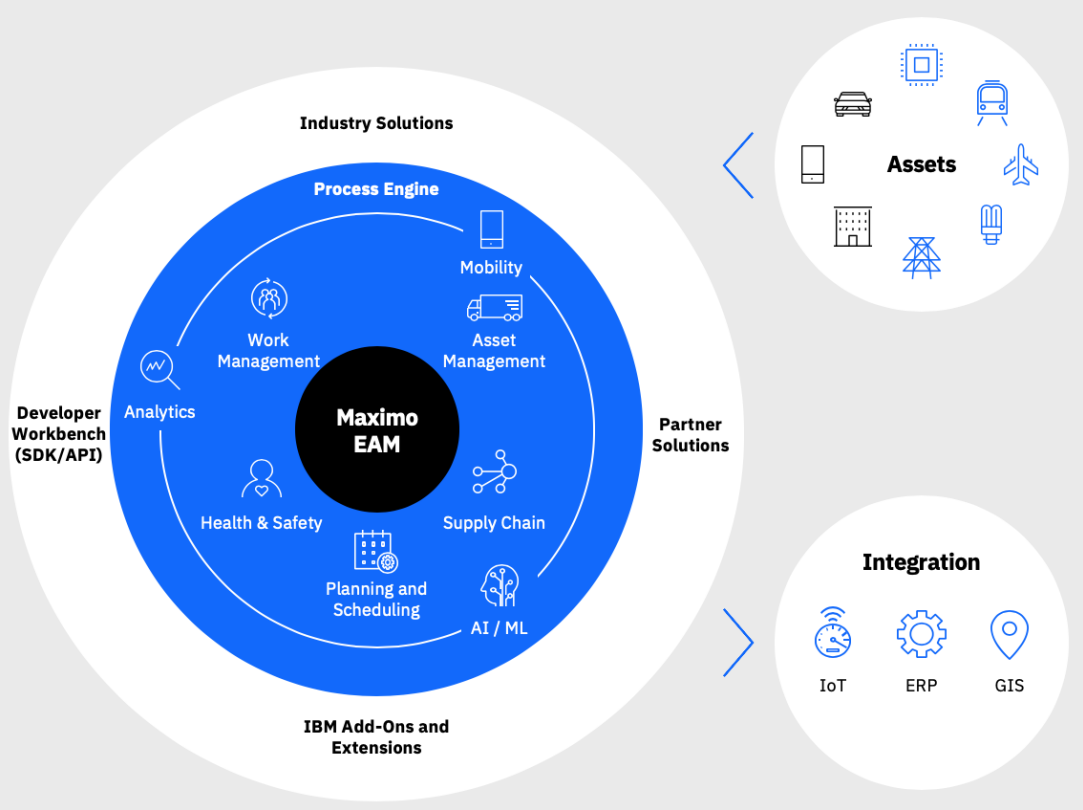
Information regarding potential future products is intended to outline our general product direction and it should not be relied on in making a purchasing decision.

The information mentioned regarding potential future products is not a commitment, promise, or legal obligation to deliver any material, code or functionality. Information about potential future products may not be incorporated into any contract.

The development, release, and timing of any future features or functionality described for our products remains at our sole discretion.

# Maximo Asset Management 7.6.1.2

- Currency Updates
- Technical Enhancements
- Customer RFE's
- Storeroom Enhancements
- BIM Focus
- Push Notifications
- Work Center Enhancements
- Customer reported issues (over 600)



# Maximo Asset Management 7.6.1.2

## Currency Updates

- Windows Server 2019, RHEL 8, Ubuntu 18.04 LTS,
- WebSphere 9.0.5 (Latest DB2 & WebSphere fix packs are certified)
- DB2 11.1.4.4/11.5, Oracle 19c, SQLServer 2017/2019
- Firefox 68 LTS, Safari 12, Chrome 81
- Drop IE Support (Adding support for Edge Chromium)
  
- Java 2 Security support

## Technical Enhancements

- API token encryption/security
- OAuth2 email authentication
- Kafka support as an alternative to JMS queue
- Support integration of MXAPIJOBPLAN

## Push Notifications

- Used by Assist AR and Anywhere.
- Available for core by configuring the User Notification application.
- Support is provided for the following: services:
  - IBM Push Notification Service
  - Google Firebase Cloud Messaging
  - Apple Push Notification Service

## Functional Enhancements

- Better handling of embedded images/attachments in communications
- License Usage Monitor support for additional products
- Support adding multiple attachments
- Updated Drilldown
- Storeroom hierarchies
- Add items to multiple storerooms
- BIM Enhancements – latest Forge viewer, updated doc

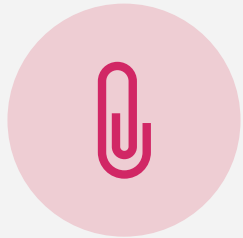
# Addressing Customer RFE's



Better handling of embedded images in communications



Support integration of MXAPIJOBPLAN



Add multiple attachments at the same time



Drilldown – updated look and feel with more levels of data and drag/drop capabilities

# Updated Drilldown Navigation

## Current

Drilldown

Select to show children. Select to hide children. Select to return location / asset.

Locations Assets

Asset: 12100 Forklift #1 Asset Up?  Site: BEDFORD

Location: SHIPPING Shipping and Receiving Department Rotating Item:

Failure Class: PROD

Show Path to Top

View Work Details

- 12100:Forklift #1
- 12200:Overhead Crane #1
- 12210:Brake System- Overhead Crane #1
- 12300:Electric Cart
- 12400:Forklift #2
- 12500:Overhead Crane #2

Cancel

## New

Drilldown

- NEEDHAM - Needham Site - OPERATING
  - BOILER - Boiler Room - OPERATING
  - FLTGAR - Fleet Garages - OPERATING
  - OFFICE - Office Building - Address Unit #2010 Oak St. - OPERATING
    - FIELDSTAFF - Field Users - OPERATING
    - MOFLOOR1 - 1st Floor, Main Office - OPERATING
    - MOFLOOR2 - 2nd Floor, Main Office - OPERATING
    - MOFLOOR3 - 3rd Floor, Main Office - OPERATING
    - MOFLOOR4 - 4th Floor, Main Office - OPERATING
    - CONF400 - Conference Room #400 - OPERATING
    - OFF401 - Office #401 - OPERATING
    - OFF402 - Office #402 - OPERATING
    - OFF403 - Office #403 - OPERATING
    - OFF404 - Office #404 - OPERATING
    - OFF405 - Office #405 - OPERATING
    - 1004 - Fire Extinguisher -
    - 7153 - Laser Printer B/W - Network - IT
  - PACKAGE - Packaging Department - OPERATING
    - BPM3100 - #1 Liquid Packaging Line - OPERATING
    - BPM3200 - #2 Liquid Packaging Line - OPERATING
  - PLANT-P1 - Materials Processing Plant #1 - OPERATING
    - MTP100 - Materials Transfer Pipe - OPERATING
  - SHIPPING - Shipping and Receiving Department - OPERATING
    - IC-67671 - Fire Extinguisher Inspection and Certificate

Drilldown

PRIMARY

Show all systems

Show path to top

Information

Location: NEEDHAM Needham Site

Status: OPERATING Operating

Type: OPERATING

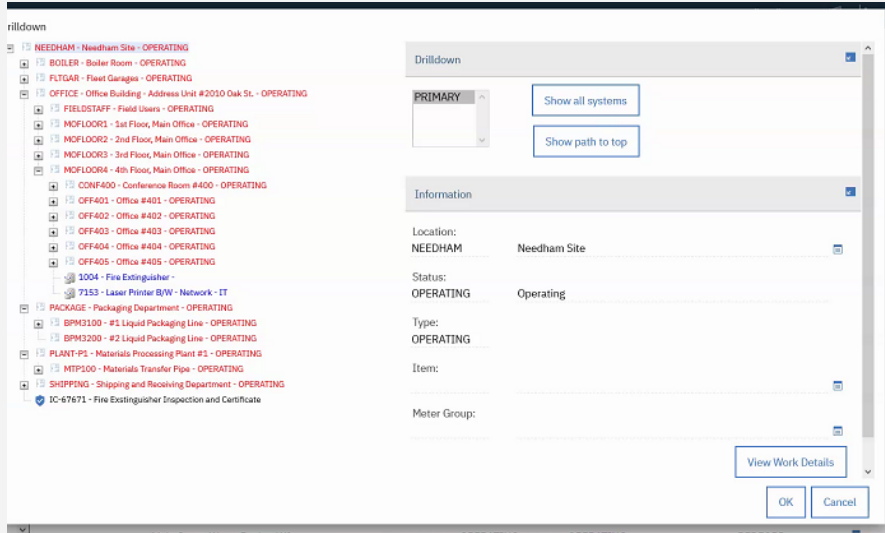
Item:

Meter Group:

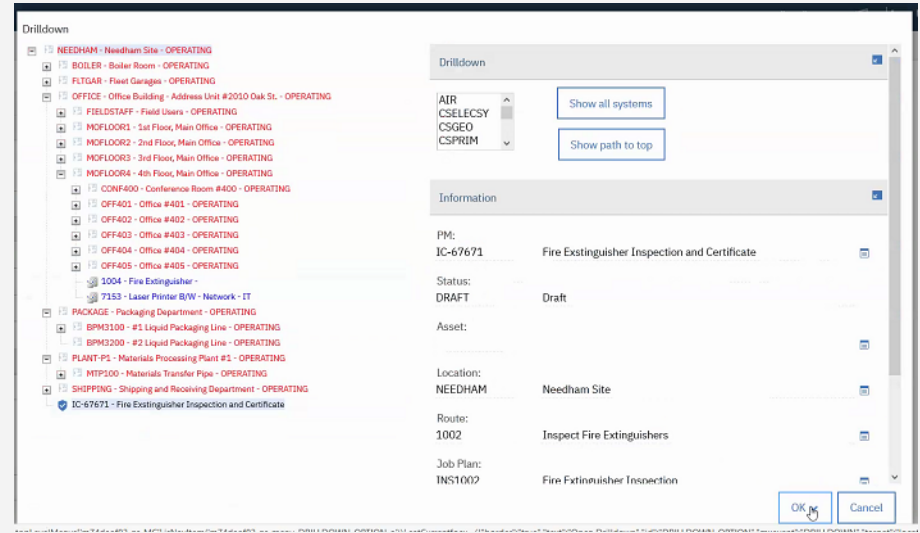
View Work Details

OK Cancel

# An updated look and feel and access to more related data



Better color coding and new icons

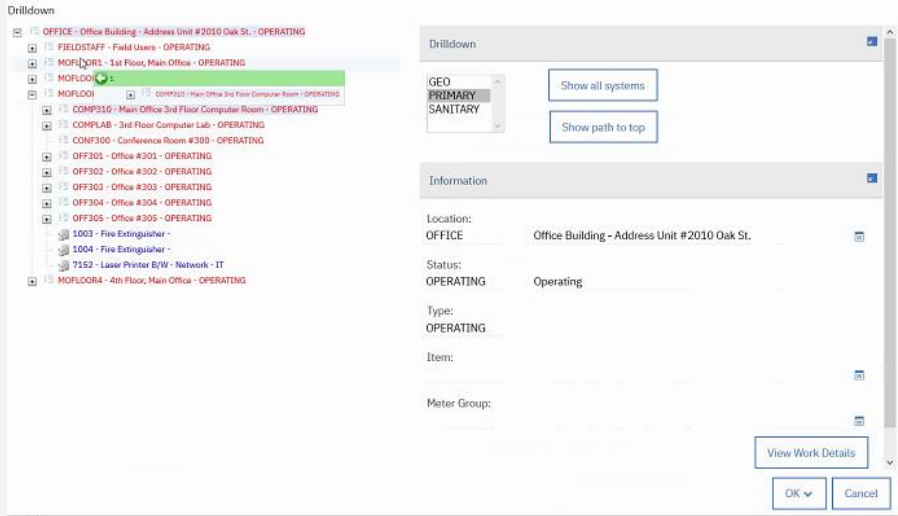


Drilldown beyond Location/Asset to PM and JP

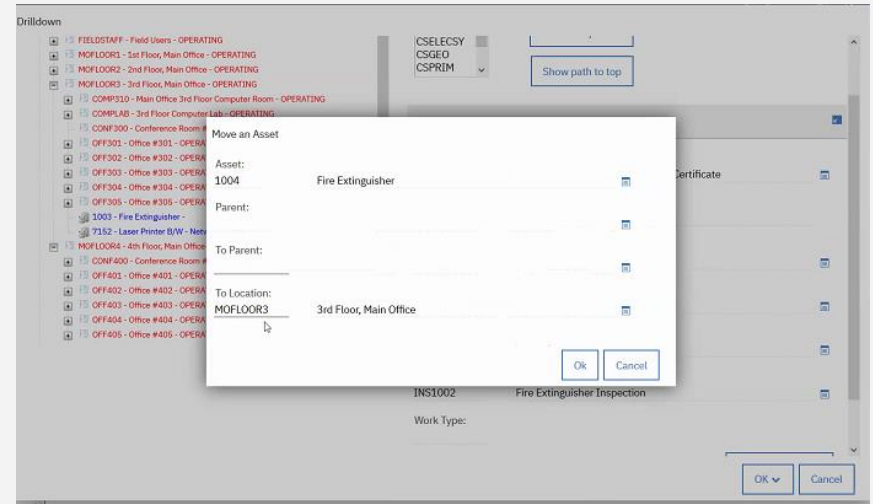
Set Property `mxe.webclient.extendedDrilldown` to true to enable new feature.

# Drilldown – take more actions from a record

Drag and Drop to move assets or locations – green indicates a valid move



Follows standard business logic for moving an asset and presents the dialog



Set Property `mxe.webclient.extendedDrilldown` to true to enable new feature.



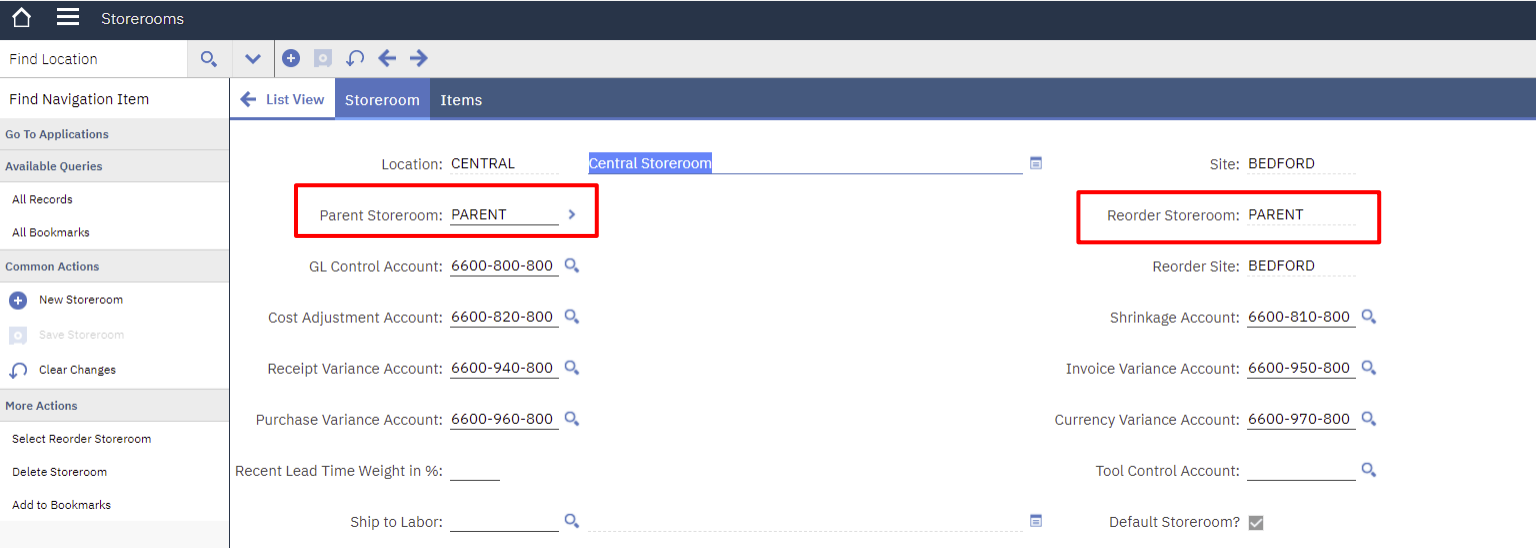
# Storeroom hierarchies

## Parent Storeroom

Insert information about a parent storeroom that can be used when adding items to multiple storerooms.

## Reorder Storeroom

Configure all items added to this storeroom with defined reorder storeroom.



# Add item to multiple storerooms

Select a storeroom in hierarchy to add item into.

Based on the hierarchy created item can be added to multiple storerooms.

Item Master

Find Item

Find Navigation Item

Go To Applications

Available Queries

All Records

All Bookmarks

Common Actions

- New Item
- Save Item
- Clear Changes
- Change Status
- Create Report

More Actions

- View Status History
- Change Capitalized Status
- Copy Item Assembly Structure
- Add Items To Storeroom
- Add Items to Multiple Storerooms
- Unit of Measure and Conversion
- View Contracts
- Add/Modify Image
- Item/Organization Details

List View Item Storerooms Vendors Specifications Item Assembly Structure

Item: 140-2916 > Lamp - remote warning light

Item Set: SET1

Commodity Group: ELEC

Commodity Code:

Meter Group:

Meter:

Lot Type: NOLOT

Maximum Quantity Issued:

Order Unit:

Issue Unit:

MSDS:

Receipt Tolerance %:

Site: BEDFORD

Top Storeroom in Hierarchy: PARENT > Parent storeroom

Refresh

Target Storerooms Filter > 1 - 5 of 5

Target Storeroom	Description	Parent	Reorder Storeroom	Site
<input checked="" type="checkbox"/> CENTRAL	Central Storeroom	PARENT	PARENT	BEDFORD
<input checked="" type="checkbox"/> PKG	Packaging Dept. Storeroom	PARENT	PARENT	BEDFORD
<input checked="" type="checkbox"/> PARENT	Parent storeroom			BEDFORD
<input checked="" type="checkbox"/> MICKE	Mickes förråd	PARENT		BEDFORD
<input checked="" type="checkbox"/> MICKE2		MICKE		BEDFORD

OK Cancel

# Add item to multiple storerooms

Details can be set for each selected storerooms before the inventory record is created.

Add Items to Multiple Storerooms

Default Values

Run Storeroom Update in Background?  Notification Email: \_\_\_\_\_

**ⓘ** The Storeroom Information table shows only the items that do not currently exist in the target storerooms.

Storeroom Information	Filter	↑	↓	←	1 - 5 of 5	→	Download	Close		
<input type="checkbox"/>	Storeroom	Item	Issue Cost Type	Unit Cost	Default Bin	Current Balance	Lot	Issue Unit	Order Unit	Site
<input type="checkbox"/>	▼ CENTRAL	140-2916	AVERAGE	0.00						BEDFORD
<input type="checkbox"/>	> PKG	140-2916	AVERAGE	0.00						BEDFORD
<input type="checkbox"/>	> PARENT	140-2916	AVERAGE	0.00						BEDFORD
<input type="checkbox"/>	> MICKE	140-2916	AVERAGE	0.00						BEDFORD
<input type="checkbox"/>	> MICKE2	140-2916	AVERAGE	0.00						BEDFORD

Details	Reorder Details	Consignment Details
<p>*Storeroom: CENTRAL</p> <p>*Item: 140-2916</p> <p>ConditionCode:</p> <p>Lot:</p> <p>*Issue Cost Type: AVERAGE</p> <p>Unit Cost: 0.00</p> <p>Standard Cost:</p>	<p>Site: BEDFORD</p> <p>Default Bin:</p> <p>Stock Category: STK</p> <p>Current Balance:</p> <p>*Issue Unit:</p> <p>Order Unit:</p>	<p>Reorder? <input checked="" type="checkbox"/></p> <p>*Reorder Point: 0.00</p> <p>*Lead Time (Days): 0</p> <p>Safety Stock:</p> <p>*Economic Order Quantity: 1.00</p> <p>Manufacturer:</p> <p>Model:</p> <p>Catalog #:</p> <p>Internal? <input checked="" type="checkbox"/></p> <p>Storeroom: PARENT</p> <p>Storeroom Site: BEDFORD</p>
		Consignment? <input type="checkbox"/>

OK Cancel

# Attach multiple files simultaneously

Create a File Attachment

Only files with the following formats can be enabled for printing: .pdf, .xls, .csv, .txt, .doc, .gif, .jpg, .ppt. Clear the check box beside the Print attached document with report if printable type option (Advanced Option) if the file being attached is not in one of these formats.

\*Select a Folder:  
Attachments   
**Select Files**

Name the document:  
\_\_\_\_\_

Advanced Options

Copy document to the default location set by your adm

Add document to the document library for others to use

Print attached document with report if printable type?

Create a File Attachment

Only files with the following formats can be enabled for printing: .pdf, .xls, .csv, .txt, .doc, .gif, .jpg, .ppt. Clear the check box beside the Print attached document with report if printable type option (Advanced Option) if the file being attached is not in one of these formats.

\*Select a Folder:  
Attachments   
**Select Files** IOT Security and Privacy - 20180927.pdf, M\_Jackaen\_aTicket.pdf

Advanced Options

Copy document to the default location set by your administrator (recommended)?

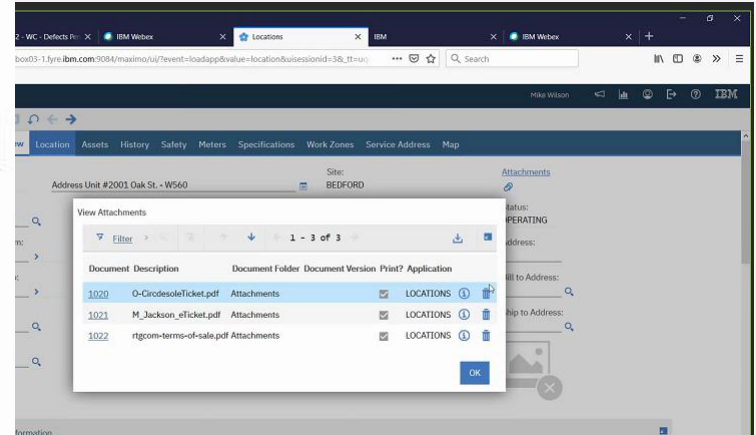
Add document to the document library for others to use?

Print attached document with report if printable type?

**OK** **Cancel**

New property to define limits on file sizes to prevent performance issues.

No new naming – defaults to file name in directory



# Maximo Work Centers

*Persona role-based applications*



Reimagined Maximo foundation



User-driven design



Streamlined actions and display for ease of training and use

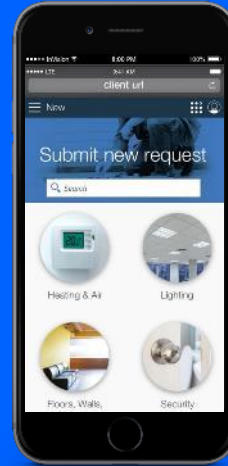


Connected mobile display

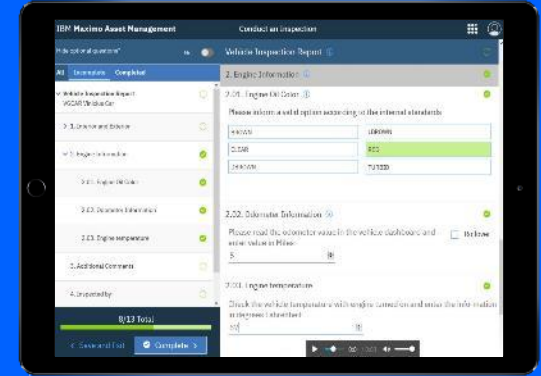


12 Work Centers focusing on Asset, Work and Inventory management

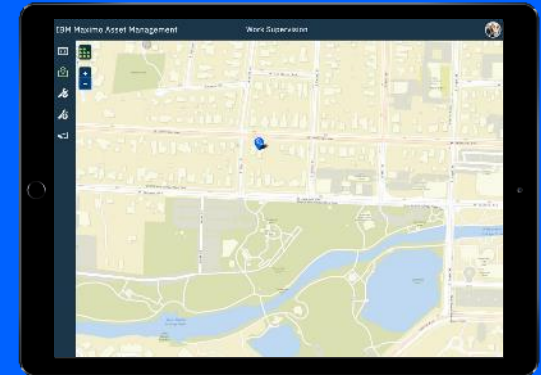
## Service Requests



## Work Inspection



## Work Supervision



# Maximo Work Centers



## Work Technician, Supervision

**Daily Work:** Works on assignments and reports actuals with minimal effort. Can quickly take follow-up actions to respond to requirements in dynamic work environments.



## Inspections

**Inspecting Assets:** Create and manage inspection forms for inspectors to complete inspections quickly and easily.



## Inventory Management

**Manage Demand:** Maintaining the storage of inventory with the proper amount of products along with order fulfillment to minimize asset downtime.



## Service Requestors

**Entering in a Request:** Ability to submit a problem quickly and efficiently.



## Business Analyst

**Understanding the Data:** Knows the Maximo database and SQL. Configures queries, KPI's, and charts to analyze Maximo data.

# Maximo 7.6.1.2 Work Center Updates

## General enhancements for all Work Centers:

- You can use **automation scripts** to work with Maximo business objects, attributes, conditions, and actions.
- Work Center users can **manage cookie preferences** with the Cookies option in the User menu.
- Usability enhancements also include **performance improvements** for mobile devices, such as tablets and cell phones.
- Enhanced **product tour** gives the ability to stop or start the tour at any time.

## Inventory :

- **Reconcile inventory balances** after a count of physical inventory and associate inventory with the storeroom GL accounts if item is not already linked to a control and shrinkage GL account.
- Reduce manual data entry by **scanning bar codes**.
- **More places to scan a bar code** - to locate a record when reviewing an item list, storeroom balances, storeroom physical counts, counts to reconcile, and reservations.
- **Picking and Staging**

## Work Supervision/Work Execution :

- Add **crews** to work order assignments.
- Ability to **report downtime** and up time for **one or more** assets using a toggle switch.
- Update **meter readings** for **multiple** assets
- **Multi-asset/Location table support**
- Support technician reporting for other labor
- **Classifications**
- Ability to configure Tech WC to **generate WOs in INPRG** status (like quick reporting)
- Enhanced **Service Address** Component
- **URL Attachments**

## Service request configuration for guest users

# Maximo Asset Management 7.6.1.3

Only fixes and some currency updates.

Following is under considerations:

- Oracle Weblogic 14.1.1
- DB2 AWSE 11.5
- Oracle 19c LTS
- SqlServer 2019
- AIX 7.2
- Ubuntu 20

*Plans for late summer!*

All future enhancements will be delivered through the application suite.



**IBM**